

# Test Report

Report No.: RLSZC00043808

Page 1 of 6

**Applicant :** FLINT PRINT ING INK (ZHU HAI)CO.,LTD

**Address :** JIN ZHOU ROAD .JIN DING TOUN .ZHUHAI .P.R.CHINA

**Report on the submitted sample(s) said to be:**

No.	Sample Names	Sample Description
1	101白色油墨	White ink
2	201原黄油墨	Yellow ink
3	303原红油墨	Red ink
4	401翠蓝油墨	Blue ink
5	501黑色油墨	Black ink
6	天那水	Transparent liquid

Sample Received Date :Jan. 20, 2010

Testing Period :Jan. 20, 2010 to Jan. 26, 2010

**Test Requested :** As specified by client, to determine the Lead, Cadmium, Mercury, Hexavalent Chromium, Six Phthalates (DBP,BBP,DEHP,DNOP,DINP, DIDP), PBBs&PBDEs content in the submitted sample.

**Test Method:**

Tested Item(s)	Test Method	Measured Equipment(s)	MDL
Lead (Pb)	IEC 62321:2008 Ed.1 Sec.10	ICP-OES	2 mg/kg
Cadmium (Cd)	IEC 62321:2008 Ed.1 Sec.10	ICP-OES	2 mg/kg
Mercury (Hg)	IEC 62321:2008 Ed.1 Sec.7	ICP-OES	2 mg/kg
Hexavalent Chromium (Cr(VI))	IEC 62321:2008 Ed.1 Annex C	UV-Vis	2 mg/kg
Polybrominated Biphenyls (PBBs)	IEC 62321:2008 Ed.1 Annex A	GC-MS	5 mg/kg
Polybrominated Diphenyl Ethers (PBDEs)	IEC 62321:2008 Ed.1 Annex A	GC-MS	5 mg/kg
Six Phthalates (DBP,BBP,DEHP,DNOP,DINP,DIDP)	Refer to ASTM D3421:1975	GC-MS	50 mg/kg

**Test Result(s):** Please refer to the following page(s).

Tested by



Technical Manager

Inspected by



Approved by

Date

Jan. 26, 2010

No. 38792741

# Test Report

Report No.:RLSZC00043808

Page 2 of 6

**Test Result(s):**

Tested Item(s)	Content		
	Sample No.1	Sample No.2	Sample No.3
Lead (Pb)	N.D.	N.D.	N.D.
Cadmium (Cd)	N.D.	N.D.	N.D.
Mercury (Hg)	N.D.	N.D.	N.D.
Hexavalent Chromium (Cr(VI))	N.D.	N.D.	N.D.

Tested Item(s)	Content		
	Sample No.4	Sample No.5	Sample No.6
Lead (Pb)	N.D.	N.D.	N.D.
Cadmium (Cd)	N.D.	N.D.	N.D.
Mercury (Hg)	N.D.	N.D.	N.D.
Hexavalent Chromium (Cr(VI))	N.D.	N.D.	N.D.

Tested Item(s)	Content		
	Sample No.1	Sample No.2	Sample No.3
<b>Six Phthalates</b>			
Dibutyl phthalate(DBP)	N.D.	N.D.	N.D.
Benzylbutyl phthalate(BBP)	N.D.	N.D.	N.D.
Di-2-ethylhexyl phthalate(DEHP)	N.D.	N.D.	N.D.
Di-n-octyl phthalate(DNOP)	N.D.	N.D.	N.D.
Diisononyl phthalate(DINP)	N.D.	N.D.	N.D.
Diisodecyl phthalate(DIDP)	N.D.	N.D.	N.D.

Tested Item(s)	Content		
	Sample No.4	Sample No.5	Sample No.6
<b>Six Phthalates</b>			
Dibutyl phthalate(DBP)	N.D.	N.D.	N.D.
Benzylbutyl phthalate(BBP)	N.D.	N.D.	N.D.
Di-2-ethylhexyl phthalate(DEHP)	N.D.	N.D.	N.D.
Di-n-octyl phthalate(DNOP)	N.D.	N.D.	N.D.
Diisononyl phthalate(DINP)	N.D.	N.D.	N.D.
Diisodecyl phthalate(DIDP)	N.D.	N.D.	N.D.

# Test Report

Report No.: RLSZC00043808

Page 3 of 6

**Test Result(s):**

Tested Item(s)	Content		
	Sample No.1	Sample No.2	Sample No.3
<b>Polybrominated Biphenyls(PBBs)</b>			
Monobromobiphenyl	N.D.	N.D.	N.D.
Dibromobiphenyl	N.D.	N.D.	N.D.
Tribromobiphenyl	N.D.	N.D.	N.D.
Tetrabromobiphenyl	N.D.	N.D.	N.D.
Pentabromobiphenyl	N.D.	N.D.	N.D.
Hexabromobiphenyl	N.D.	N.D.	N.D.
Heptabromobiphenyl	N.D.	N.D.	N.D.
Octabromobiphenyl	N.D.	N.D.	N.D.
Nonabromobiphenyl	N.D.	N.D.	N.D.
Decabromobiphenyl	N.D.	N.D.	N.D.
<b>Polybrominated Diphenyl Ethers(PBDEs)</b>			
Monobromodiphenyl ether	N.D.	N.D.	N.D.
Dibromodiphenyl ether	N.D.	N.D.	N.D.
Tribromodiphenyl ether	N.D.	N.D.	N.D.
Tetrabromodiphenyl ether	N.D.	N.D.	N.D.
Pentabromodiphenyl ether	N.D.	N.D.	N.D.
Hexabromodiphenyl ether	N.D.	N.D.	N.D.
Heptabromodiphenyl ether	N.D.	N.D.	N.D.
Octabromodiphenyl ether	N.D.	N.D.	N.D.
Nonabromodiphenyl ether	N.D.	N.D.	N.D.
Decabromodiphenyl ether	N.D.	N.D.	N.D.

# Test Report

Report No.:RLSZC00043808

Page 4 of 6

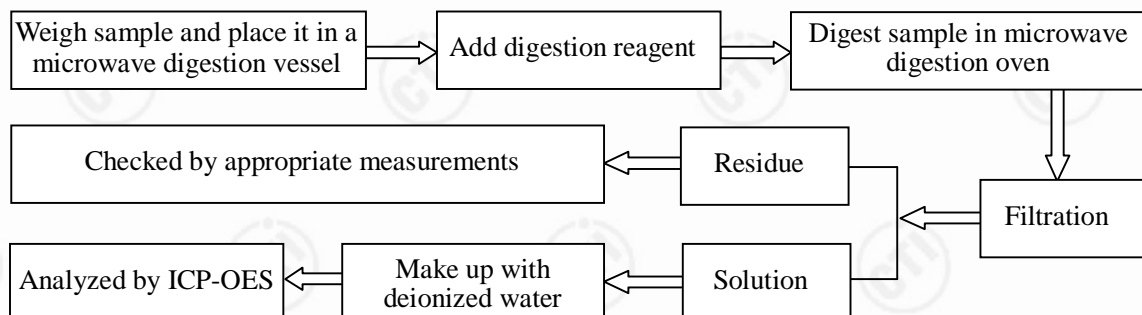
**Test Result(s):**

Tested Item(s)	Content		
	Sample No.4	Sample No.5	Sample No.6
<b>Polybrominated Biphenyls(PBBs)</b>			
Monobromobiphenyl	N.D.	N.D.	N.D.
Dibromobiphenyl	N.D.	N.D.	N.D.
Tribromobiphenyl	N.D.	N.D.	N.D.
Tetrabromobiphenyl	N.D.	N.D.	N.D.
Pentabromobiphenyl	N.D.	N.D.	N.D.
Hexabromobiphenyl	N.D.	N.D.	N.D.
Heptabromobiphenyl	N.D.	N.D.	N.D.
Octabromobiphenyl	N.D.	N.D.	N.D.
Nonabromobiphenyl	N.D.	N.D.	N.D.
Decabromobiphenyl	N.D.	N.D.	N.D.
<b>Polybrominated Diphenyl Ethers(PBDEs)</b>			
Monobromodiphenyl ether	N.D.	N.D.	N.D.
Dibromodiphenyl ether	N.D.	N.D.	N.D.
Tribromodiphenyl ether	N.D.	N.D.	N.D.
Tetrabromodiphenyl ether	N.D.	N.D.	N.D.
Pentabromodiphenyl ether	N.D.	N.D.	N.D.
Hexabromodiphenyl ether	N.D.	N.D.	N.D.
Heptabromodiphenyl ether	N.D.	N.D.	N.D.
Octabromodiphenyl ether	N.D.	N.D.	N.D.
Nonabromodiphenyl ether	N.D.	N.D.	N.D.
Decabromodiphenyl ether	N.D.	N.D.	N.D.

**Note:** -MDL = Method Detection Limit  
 -N.D. = Not Detected (<MDL)  
 -mg/kg = ppm = parts per million

**Test Process:**

**1. Test for Pb/Cd Content**

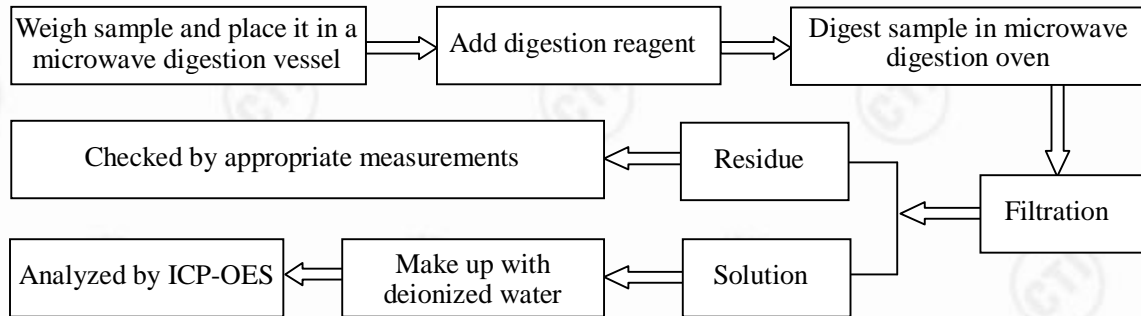


# Test Report

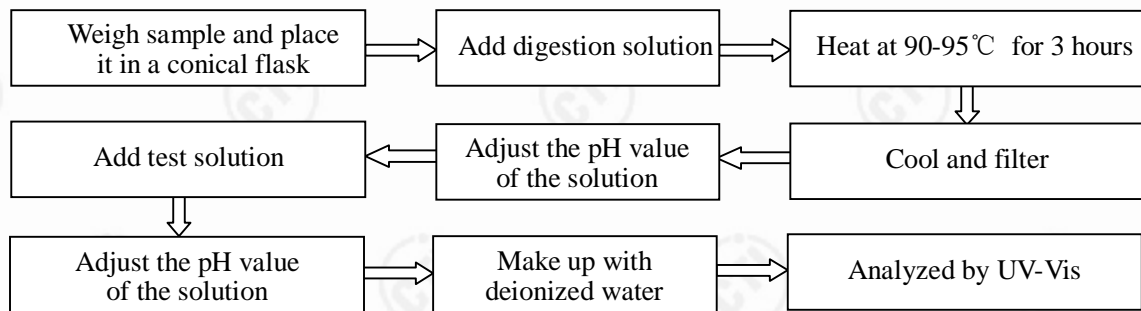
Report No.: RLSZC00043808

Page 5 of 6

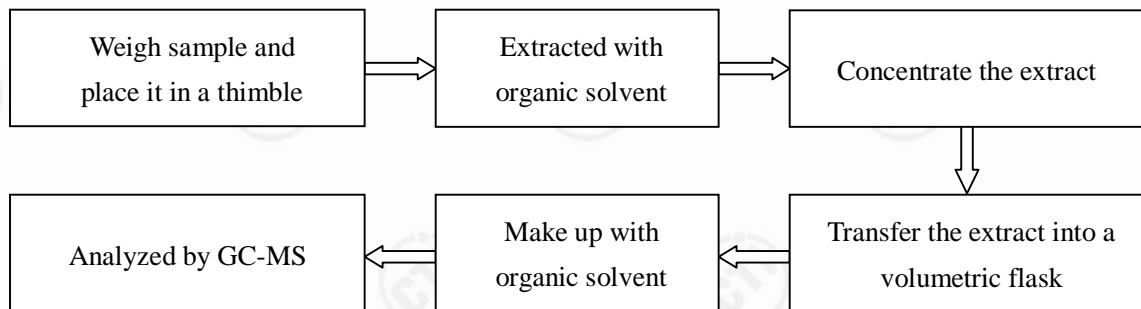
## 2. Test for Hg Content



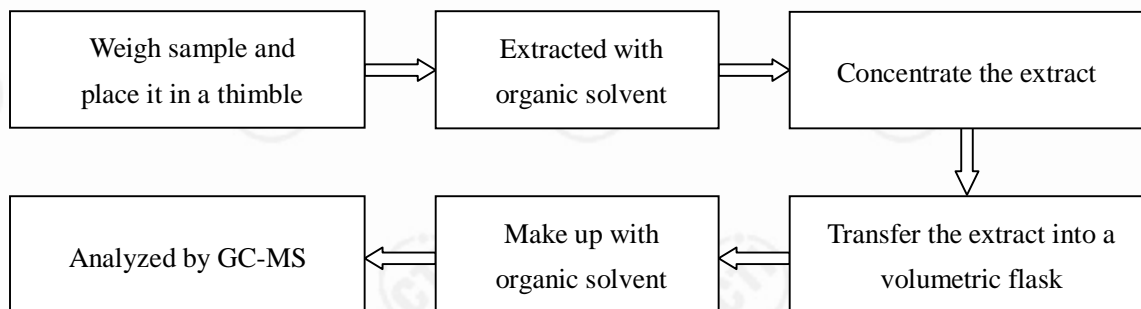
## 3. Test for Chromium(VI) Content



## 4. Test for PBBs/PBDEs Content



## 5. Test for Six Phthalates Content



# Test Report

Report No.: RLSZC00043808

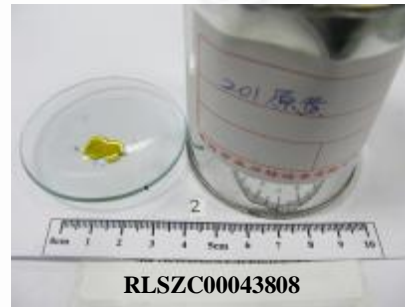
Page 6 of 6

## Photo(s) of the sample(s)

Sample No.1



Sample No.2



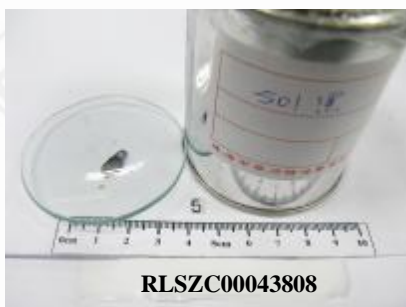
Sample No.3



Sample No.4



Sample No.5



Sample No.6



\*\*\* End of report \*\*\*

This report is considered invalidated without the Special Seal for Inspection of the CTI, This report shall not be altered, increased or deleted. The results shown in this test report refer only to the sample(s) tested. Without written approval of CTI, this test report shall not be copied except in full and published as advertisement.

Building C, Hongwei Industrial Zone, Baoan 70 District, Shenzhen